



Institute for
Research on
Poverty

UNIVERSITY OF WISCONSIN-MADISON

Economic Mobility Fellows Call for Applications

Applications Due April 3, 2024

Fellowships begin summer 2024

Welcome



REBECCA SCHWEI
RESEARCH AND POLICY
COORDINATOR, INSTITUTE FOR
RESEARCH ON POVERTY

HHS Partners



JOLEEN JANELLE GEORGE
HHS/Administration for Children and
Families
Office of Community Services



AMANDA BENTON
HHS/Office of the Assistant Secretary
for Planning and Evaluation
Office of Human Services Policy

Agenda

- Overview of IRP and our partnership with HHS
- Goals and elements of the EMF program
- OCS and ASPE fellowship positions
- Logistics of the application process
- Application resources
- Q & A
- Wrap up and closing

Institute for Research on Poverty

- Located within the University of Wisconsin-Madison
- <https://www.irp.wisc.edu/>
- Over 312 on and off-campus affiliates
- National Research Center on Poverty and Economic Mobility
- Leads the Collaborative of Poverty Centers

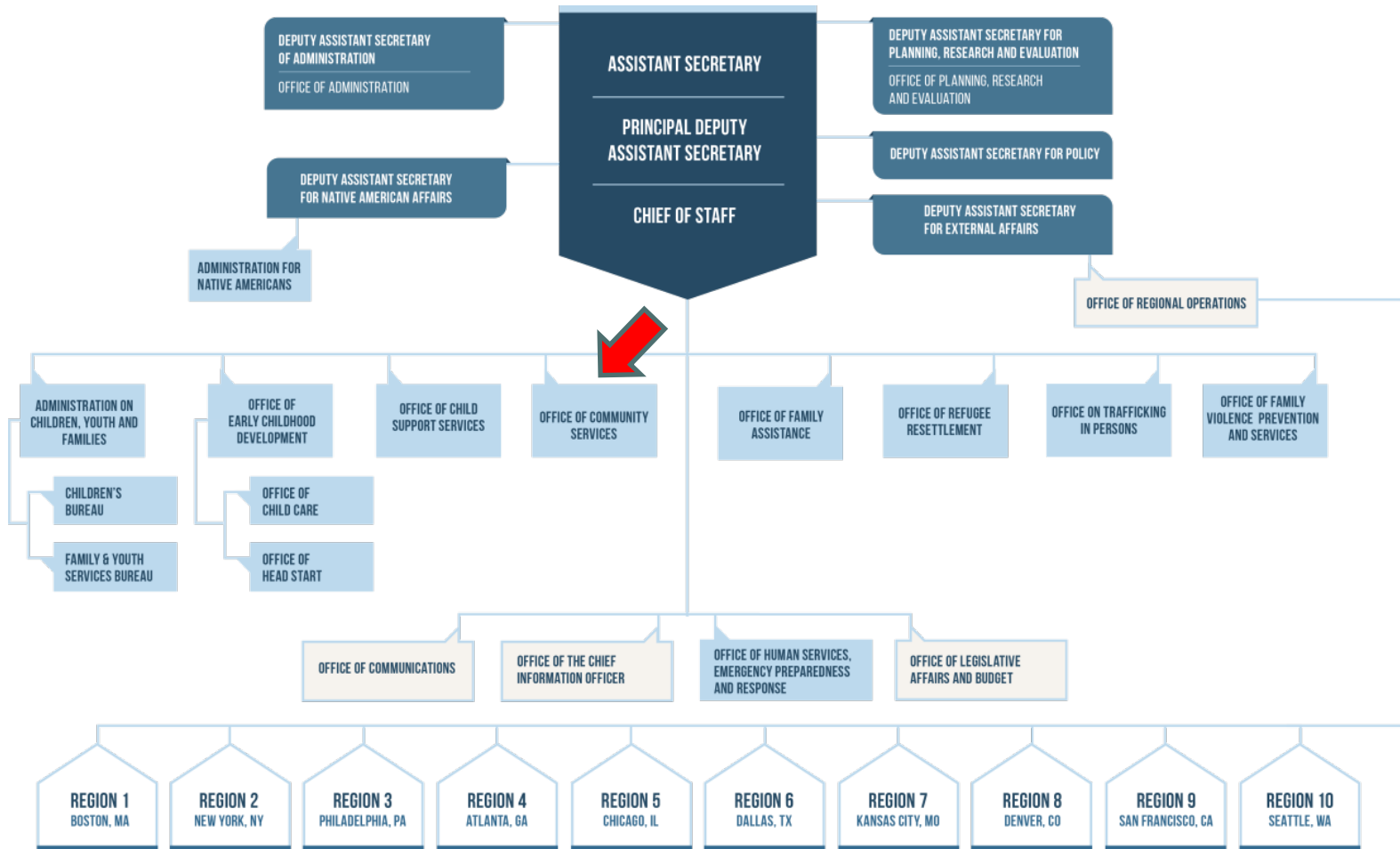
Fellowship Elements

- Employed by UW-Madison
- One-year fellowships at HHS in DC
- Develop an individualized training plan
- Matched with policy mentor
- \$1,500 professional development budget
- Participate in IRP's virtual professional development training series.
- Compensation is between \$61-68k per year

Eligibility

- US citizen
- Within 1 year of completing your master's degree
- Pass a federal security background check
- Meet the key skills and experience in the relevant position description
- Encourage applications from candidates who meet the NIH definition of underrepresented in academia

Administration for Children and Families (ACF) Organizational Chart



Office of Community Services (OCS) Programs

- OCS Block and Formula Programs
 - Community Services Block Grant (CSBG)
 - Low Income Home Energy Assistance Program (LIHEAP)
 - Social Services Block Grant (SSBG)
 - Low Income Household Water Assistance Program (LIHWAP) (Mandatory/Formula, not a Block Grant)
- OCS Discretionary Programs
 - Rural Community Development (RCD)
 - Community Economic Development (CED)
- OCS Demonstration Programs
 - Diaper Distribution Demonstration and Research Pilot (DDDRP)
 - Affordable Housing and Supportive Services Demonstration (AHSSD)
 - Medical-Legal Partnerships Plus (MLP+)



OCS Economic Mobility Fellows: Responsibilities and Projects

Responsibilities

- Manage a portfolio of and provide technical assistance to state, territory, and/or tribal grant recipients.
- Lead and assist with OCS' on-site and virtual monitoring efforts.
- Conducts program operations and policy analysis to support the administration of OCS programs.
- Draft and review program reports, policy guidance, briefing papers, presentations, and talking points.
- Analyze, summarize, and synthesize program data and policy to advance goals of programs.

Projects - LIHEAP and Social Determinants of Health

- The Effects of Heat Stress on Mothers & Infants
- How Weatherization Impacts on Health, Economics, and Environment Involving Vulnerable Population
- How LIHEAP Flexibilities Can Be Optimized to Best Serve Low-income Puerto Ricans during Natural Disasters

OCS Needs: Knowledge, Skills, and Abilities

- Training or professional experience working directly in or on issues around U.S. poverty reduction.
- Personal or professional experience working with families with low incomes from diverse backgrounds.
- Proficiency with Microsoft Office Suite. Experience with eOffice platform helpful.
- High attention to detail, particularly regarding data analysis.
- Strong writing skills with the ability to produce and edit a range of products from policy reports to PowerPoint slides.
- Ability to work independently and in a group setting under **tight timelines** and **shifting priorities**.

Assistant Secretary for Planning and Evaluation (ASPE)

- ASPE is the principal advisor to the HHS Secretary on policy development – sometimes called the Secretary’s “think tank”
- Key topics covered by ASPE’s Office of Human Services Policy include early care and education, child welfare, youth development, poverty and measurement, benefits access and delivery, child and family well-being, and more

ASPE/CICC

- ASPE/HSP standing up and coordinating a new Children's Interagency Coordinating Council (CICC)
- CICC charged by Congress with fostering greater coordination and transparency on child poverty across federal agencies and examining a broad array of cross-cutting issues affecting child poverty and well-being
- **Duties:** Coordinate with and support federal partners, research projects, leadership, individuals with lived experience, convenings and other meetings

ASPE/CICC Child Poverty and Well-Being Work: Key Skills

- Experience working on US poverty reduction & child/family well-being
 - Lived experience with accessing social service systems and/or navigating criminal justice systems highly valued (not required)
- Knowledge of relevant federal programs and policies
- Strong attention to detail, ability to manage multiple competing priorities
- Ability to work both independently and in a group
- Experience engaging individuals and communities with lived experience
- Ability to communicate clearly and concisely with varied audiences

Application Process

- Complete the application form:
 - Two page letter of interest
 - Position – ASPE or OCS or both
 - Key skills
 - Career goals
 - Incorporating diversity
 - Current resume
 - Contact information for three references
 - Transcripts
 - Relevant research/writing sample

Selection Process and Timeline

- April 3, 2024 by 11:59 p.m. CT
- Decisions by mid May
 - Top candidates sent to HHS
 - HHS completes interviews
- Fellowship begins in summer 2024 (usually late summer but start date is flexible)

Economic Mobility Fellow Program

- Work at
 - ASPE – Office of the Assistant Secretary for Planning and Evaluation
 - Administration for Children and Families OCS
 - Office of Community Services

Next Steps

- IRP's website best source of information
- Send any questions to irpapply@ssc.wisc.edu

Q & A

Put your questions in the Chat or
the Q & A box

Thank you!

Send follow up questions to
irpapply@ssc.wisc.edu