

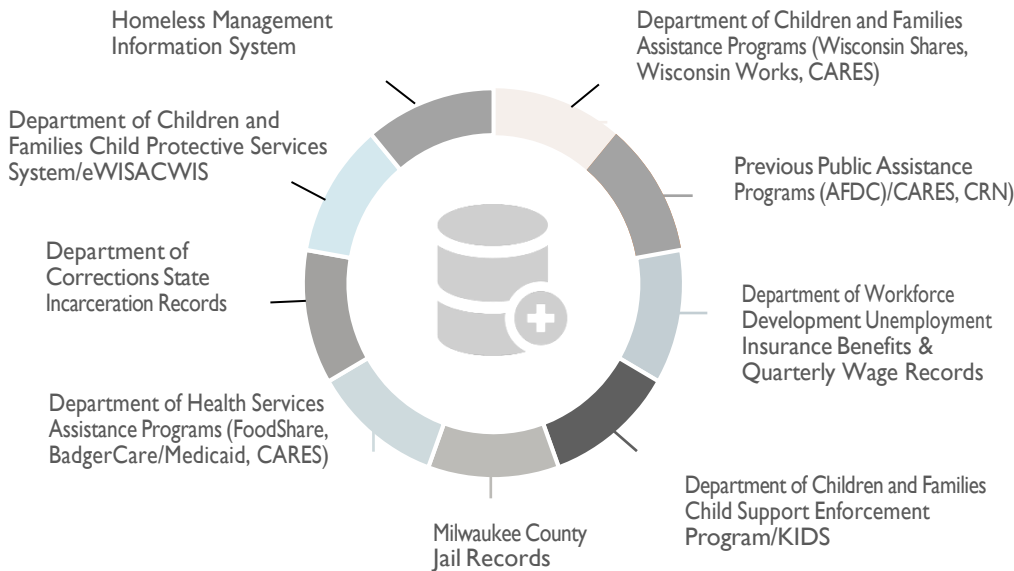
THE INSTITUTE FOR RESEARCH ON POVERTY

MAKING A DIFFERENCE FOR OVER 50 YEARS

The Institute for Research on Poverty (IRP) functions as an independent, nonpartisan multidisciplinary center within the College of Letters and Science at the University of Wisconsin–Madison. IRP currently serves as the sole federally funded National Research Center on Poverty and Economic Mobility through a five-year, \$10.6 million cooperative agreement with the U.S. Department of Health and Human Services.

THE WISCONSIN ADMINISTRATIVE DATA CORE

IRP is home to one of the richest integrated administrative data systems in the country, including records for over 8.2 million Wisconsin residents and data from:



YOU DO THE SCIENCE, WE'LL DO THE REST!

The IRP supports and collaborates with **300+ poverty research affiliates** on campus and across the nation and our research portfolio includes over **\$32 million in external awards**.

IRP offers extensive grant administration services including:

-  **PRE- & POST-AWARD SERVICES**
Budgeting, Reporting, Reconciliation
-  **DATA SECURITY**
Human Subject Protocols
-  **EDITORIAL SUPPORT**
Copyediting, Formatting, Data Visualization
-  **HR SUPPORT**
Faculty Pay-Plans, Faculty & Student Payroll, Effort Reporting

DISSEMINATION

IRP translates and disseminates research on poverty and inequality for a range of audiences through a variety of resources including,

FOCUS & FOCUS + | FAST FOCUS | DISCUSSION PAPERS | FACT SHEETS
 REPORTS | POVERTY FAQS | SEMINARS | PODCASTS | WEBINARS
 LEARNING EXCHANGES WITH STATE & FEDERAL AGENCIES



VISIT OUR WEBSITE TO LEARN MORE: irp.wisc.edu