

IRP Affiliate Benefits & Services



**Institute for
Research on
Poverty**

UNIVERSITY OF WISCONSIN-MADISON

YOU DO THE SCIENCE, WE'LL DO THE REST

The Institute for Research on Poverty (IRP) offers extensive grant administration services including:



PRE- & POST- AWARD SERVICES

Budgeting, reporting, reconciliation



EDITORIAL & GRAPHIC SUPPORT

Editing, formatting, data visualization



COMPUTING SERVICES

SSCC access, assistance



HUMAN RESOURCES SUPPORT

Pay plans, payroll, reporting



IRB SUPPORT

Protocol development & management



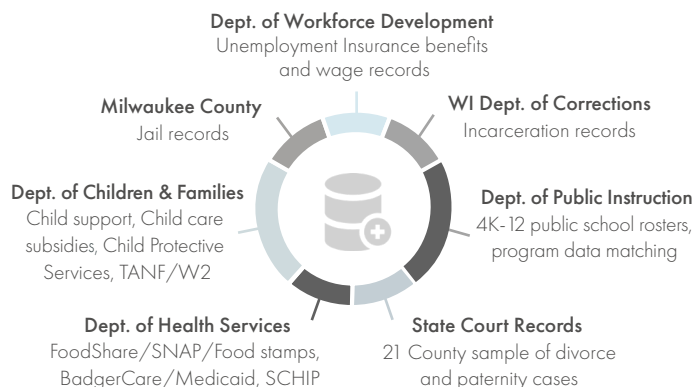
RESEARCH DISSEMINATION

Print, multi-media

Learn more @ www.irp.wisc.edu/administrative-staff-task-contact/

THE WI ADMINISTRATIVE DATA CORE

IRP houses one of the richest linked administrative data systems in the country, including historic records for more than 7 million Wisconsin residents and data from:



Learn more @ www.irp.wisc.edu/wadc/

GET YOUR RESEARCH NOTICED

IRP translates and disseminates research on poverty and inequality through:

- Focus & Focus+ e-Newsletter
- Fast Focus Newsletter
- Discussion Papers
- Fact Sheets
- Reports
- Poverty FAQs
- Seminars (see below)
- Podcasts
- Webinars
- Videos
- WI & Federal Agency Learning Exchanges

Learn more @ www.irp.wisc.edu/editorial-staff-task-contacts/

TRAINING FOR GRAD STUDENTS

The IRP Graduate Research Fellows (GRF) program offers interdisciplinary training, networking, and research support, including funding, for Ph.D. students who expect to complete a poverty related dissertation.

Learn more @ www.irp.wisc.edu/training/graduate-research-fellows-program/

IRP SEMINAR SERIES

IRP's weekly seminar series highlights cutting edge poverty research from IRP affiliates around the country. Held Thursdays from 12:15-1:30 p.m.

Learn more @ www.irp.wisc.edu/events

MAKING A DIFFERENCE FOR OVER 50 YEARS • www.irp.wisc.edu

IRP is an independent, nonpartisan multidisciplinary center at the University of Wisconsin-Madison in the College of Letters and Science. IRP serves as the sole federally funded National Poverty Research Center through a five-year, \$9.5 million agreement with the U.S. Department of Health and Human Services. IRP supports and collaborates with more than 200 research affiliates across the United States and has a portfolio exceeding \$30 million in external awards.