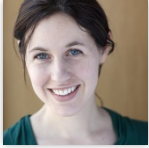


# IRP Seminar Calendar, Fall 2016

**September 8, 2016**



**Evidence-Based Corrections**

[Cecelia Klingele](#), Law School, University of Wisconsin-Madison

**September 15, 2016**



**Impact of School-Based Support on Educational Outcomes of Teen-Mothers: Evidence from New Zealand's "Teen Parent Units"**

[Tim Maloney](#), Department of Economics, Auckland University of Technology

**September 22, 2016**



**Effects of Higher EITC Payments on Children's Health, Quality of Home Environment, and Non-Cognitive Skills**

[Yang Wang](#), La Follette School of Public Affairs, University of Wisconsin-Madison

**September 29, 2016**



**Income Disparities in Objective and Subjective Indicators of Health Over the Lifespan**

[Julien Teitler](#), Social Work and Sociology, Columbia University

**October 6, 2016 - Location TBA**



**The Language of the Unheard: Legal Services & the 1960s Race Riots**

[Jamein Cunningham](#), Department of Economics, Portland State University

**October 13, 2016**



**Making the Invisible Visible Through Critical Race Theory & Intersectionality Praxis**

[Nancy López](#), Department of Sociology, University of New Mexico

**October 20, 2016**



**What Does It Really Cost to Raise a Child?**

[Harry Brighouse](#), Department of Philosophy, University of Wisconsin-Madison

**October 27, 2016**



**Development and Usability Testing of a Smartphone App to Support Parenting by Low-Income Fathers**

[Tova Walsh](#), School of Social Work, University of Wisconsin-Madison

**November 10, 2016**



**The Timing of SNAP Benefit Receipt and Child Well-Being**

[Anna Gassman-Pines](#), Sanford School of Public Policy and Department of Psychology and Neuroscience, Duke University

**November 17, 2016**



**Preying on the Poor: How We Made Criminal Justice Profitable and Remade American Citizenship**

[Joe Soss](#), Hubert H. Humphrey School of Public Affairs, Department of Political Science, and Department of Sociology, University of Minnesota

**December 1, 2016**



**Separate and Unequal: Race and the Mortgage Market Imprints of Breath**

[Abigail Sewell](#), Department of Sociology, Emory College

**December 8, 2016**



**Inequality and Taxation: Evidence from the U.S. States, 1980-2010**

[Rourke O'Brien](#), La Follette School of Public Affairs, University of Wisconsin-Madison

**December 15, 2016**



**Disentangling Poverty, Race and Place: Findings from the Survey of the Health of Wisconsin**

[Kristen Malecki](#), Department of Population Health Sciences, University of Wisconsin-Madison